

SCHOOL CONTEXT STATEMENT

Updated: 19/12/2017

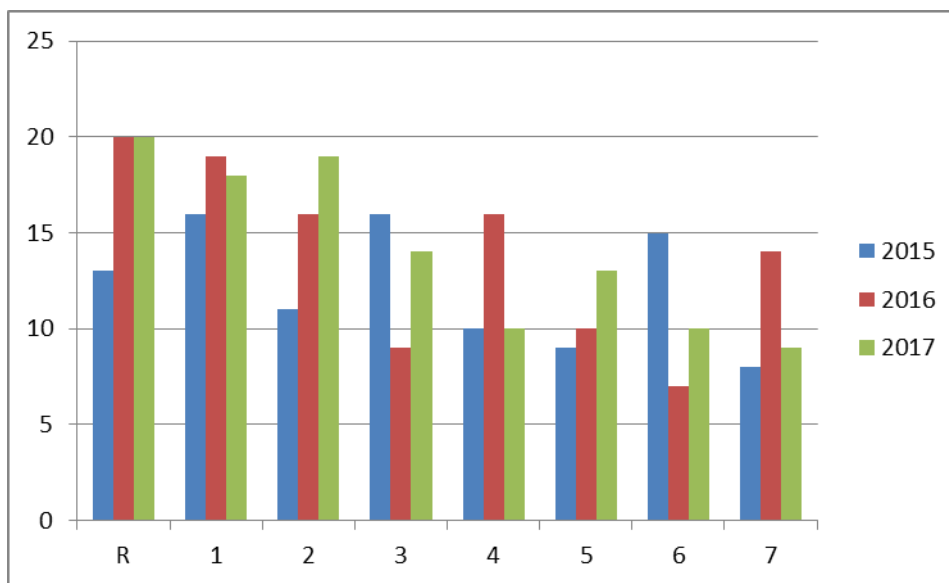
School number: 0460

School name: WALLAROO MINES PRIMARY SCHOOL

1. General information

School name	WALLAROO MINES PRIMARY SCHOOL	
School No.	0460	
Principal	ADELE KELEHER	
Postal Address	Lipson Avenue, Kadina 5554	
Location Address	Lipson Avenue, Kadina 5554	
Distance from GPO	160 kms	Phone No. 08 88211988
CPC attached	NO	Fax No. 08 88212979
Email	dl.0460.info@schools.sa.edu.au	

Enrolments



Specific Population Enrolment	2015	2016	2017
ATSI	10%	17%	16%
Disabilities	10%	23%	23%
School Card	54%	63%	55%

- **School website address**
www.walmineps.sa.edu.au
- **Staffing numbers**
Principal
Student Well Being Coordinator 0.6
Senior Leader (Learning Improvement Primary) 0.5 (NY Partnership)
10 teaching staff (AET and specialist music teacher)
- **OSHC**
Access to the OSHC through the Wallaroo Primary is available.
A bus transports students to and from
- **Enrolment trends**
Numbers fluctuate due to transient community.
Small increase from last year.
- **Special arrangements**
N/A
- **Year of opening**
School established 1876.
Relocated to current site 1967.
- **Public transport access**
No public transport to the school, but school funded bus transport to school from Kadina Public Library and return each day (2 kms away) available.
Taxi service available and daily bus to Adelaide.

2. Students (and their welfare)

- **General characteristics**
A high percentage of School Card students. (over 50%), with a significant percentage of transient students.
The school has a reputation for making a difference for all students and is seen as a small school alternative in Kadina as the only R-7 school.
Smaller class sizes
- **Student management**
A well-established Student Well Being program is in place.
Our core values are Relationships, Collaboration, Trust, Understanding and Communication and underpin all that we do.
- **Student government**
An SRC is elected each year. They hold regular meetings and participate in decision making and fundraising

3. Key School Policies

- **Site Learning Plan and other key statements or policies**

Vision: to provide a, caring and stimulating environment where children will be challenged to achieve their fullest potential, so that they can make their best contribution to their local and wider communities.

Values: At Wallaroo Mines Primary School we believe that when we focus on our core Values by working collaboratively, understanding each other, communicating effectively and trusting one another we will develop positive relationships within our school community.

- **Site Plan focusses on:**
 1. Numeracy
 2. Literacy

4. Curriculum

- **Subject offerings**

All areas of the Australian Curriculum.

We have an emphasis on whole school programs that support literacy and numeracy development. These include: Jolly Phonics, Big 6 of Reading and Big Ideas in Number. These feature prominently in our learning programs.

Japanese is the Language taught through Open Access College

- **Learning needs**

- 100% of our students are supported through whole school intervention programs in literacy and numeracy.
- 100% of our students have a Personal Learning Plan developed by teachers in consultation with parents and students.
- Our learner intervention framework also provides additional support for students with disabilities and students at risk.

- **Teaching methodology**

- Focus on the literacy, numeracy and wellbeing of all students with SSO's supporting this.
- Collaborative approach amongst staff.
- Digital Technology is strong focus with ipod touch devices, ipads and Macbooks available for student use. All devices are mobile for a range of flexible options.
- All teaching staff have a MacBook for teaching and learning purposes.
- Intentional use of IT to support and enhance student learning is an expectation.

- **Assessment procedures and reporting**
 - Assessment is ongoing with base line data and final data used to map student progress.
 - A range of diagnostic, formative and summative assessment strategies are used.

5. Sporting Activities

- SAPSASA.
- Sports Day
- Cross Country
- Swimming – Term 1
- School gym

6. Other Co-Curricular Activities

- **General**
Children involved in all community sporting events.
- **Special**
 - Kernewek Lowender celebrations every two years.
 - YP Field Days every two years.
 - Book Week/Literacy & Numeracy Week.
 - Better Buddies program.
 - Community Fair in term 4 each year

7. Staff (and their welfare)

- **Staff profile**
 - A mixture of new and long term staff that are well established in the area. A mixture of experience provides a balanced approach.
 - Very open to new ideas.
- **Leadership structure**
Principal supported by PAC.
0.6 Student Well Being Coordinator
0.5 Senior Leader (Learning Improvement Primary) and Curriculum Coordinator
- **Staff support systems**
Co-operative work groups and teams.
Shared T& D with other schools.
Some Training & Development available locally
- **Performance Management**
Performance Development Plans and meetings with Principal.

- **Staff utilisation policies**

Tier 2 staffing used to support learner intervention programs.
SSO's used for classroom support and to support special programs.

- **Access to specialist staff**

Guidance Officer, Disability Consultant, Speech & language Pathologist, Interagency Student Behaviour Management, Hearing Impaired Teachers based at Regional Offices.
Regular visits from NOVITA, Autism SA

8. Incentives, support and award conditions for Staff

- **Complexity placement points**

1.0

- **Isolation placement points**

2.0

- **Housing assistance**

Some housing is available within Kadina.

- **Cooling for school buildings**

All classrooms have reverse cycle units.

- **Relocation assistance**

Yes

- **Principal's telephone costs**

No

9. School Facilities

- **Buildings and grounds**

Very well maintained: classroom rooms (4 joined together and one stand alone). The main building houses 1 classroom, music room, library, SSO/Specialist Teacher space and Admin area of SAMCON design.

Well grassed, playground with plenty of trees.

Canteen and sports hall developed as part of the BER/NSP funding.

- **Cooling**

Yes

- **Specialist facilities**

Wireless internet access across site
HDTV's in all classrooms and library

- **Student facilities**
School Canteen that operates Wednesday to Friday
Breakfast Club operates Monday, Wednesday, Friday
- **Staff facilities**
Staff room
Access to EDSAS and the internet available.
- **Access for students and staff with disabilities**
Yes, to all buildings.
- **Access to bus transport**
Contractor's buses available, bus transport to and from Kadina Memorial School/public library daily.

10. School Operations

- **Decision making structures**
Policy in place, committees established with staff and parent representation.
- **Regular publications**
Newsletter, Trucc, day book (for staff news), staff handbook, parent handbook, OHS&W publications.
- **School financial position**
Committed to Literacy/Numeracy and Information Technology.
Financially sound.
- **Special funding**
CAP.

11. Local Community

- **General characteristics**
Town based community with diverse backgrounds.
- **Parent and community involvement**
Strong parent involvement through Governing Council and committees.
Involved in different aspects of student learning to varying degrees.
- **Other local care and educational facilities**
Kadina Pre-School, Kadina Memorial School, TAFE, Harvest Christian School, Kadina Child Care Centre, Community Kids Child Care Centre and Family Day Care Services.
- **Commercial/industrial and shopping facilities**
Good shopping facilities. Some local industries, many related to farming.

- **Other local facilities**

Community Sports Complex, Show Grounds, Medical Centre, Hospital at Wallaroo, Hockey/Softball grounds, Go-kart track, BMX Bike Club, Town Oval for football, cricket etc.
Approximately two hours drive from Adelaide.

- **Availability of staff housing**

Some available.

- **Local Government body**

Copper Coast District Council.

12. Further Comments

- As one of 'Kadina's best kept secrets' Wallaroo Mines Primary School offers a small school learning/teaching opportunity.
- Wallaroo Mines Primary School is a small school with a deep history and a strong sense of identity within the community.